

**LADIES SOFT-SHELL JACKET & HOODIE SIZE CHART**  
**IN CM**



<b>SR</b>	<b>DESCRIPTION</b>	<b>L6</b>	<b>L8</b>	<b>L10</b>	<b>L12</b>	<b>L14</b>	<b>L16</b>	<b>L18</b>	<b>L20</b>	<b>L22</b>	<b>L24</b>	<b>L26</b>
A	LENGTH BACK	60	63	66	69	71	74	76	79	81	83	85
B	CHEST	44	46	49	51	53.5	56	58	60	62	64	67
C	WAIST	40	42	45	47	49.5	52	54	56	58	60	63
D	BOTTOM	45	47	50	52	54.5	57	59	61	63	65	68
E	SLEEVE LENGTH	65	67	69	72	75	78	80	82	84	87	89
F	ARM HOLE	19	20	21	22	23	24	25	26	27	28	29.5
G	SLEEVE CUFFS	9	9.5	10	11	11.5	12.5	13	13.5	14	14.5	15

## MENS SOFT-SHELL JACKET & HOODIE SIZE CHART IN CM



SR	DESCRIPTION	XS	S	M	L	XL	2XL	3XL	4XL	5XL	6XL	7XL
A	LENGTH FRONT	72	74	76	78	79.5	83	85	88	90.5	92	93
B	CHEST	50	53	55.5	58.5	61.5	64	67	69	71	73	74
C	BOTTOM	48.5	51.5	54	57	60	62.5	65.5	67.5	69.5	71.5	72.5
D	SLEEVE LENGTH	74	76	78	81	82.5	85	88	90	92	94	96
E	ARM HOLE	24	25	26	27	28	29	30	31	32	33	34
F	SLEEVE CUFFS	12	13	13.5	14	14.5	15	16	16.5	17	17.5	18.5

**KIDS SOFT-SHELL JACKET & HOODIE SIZE CHART**  
**IN CM**

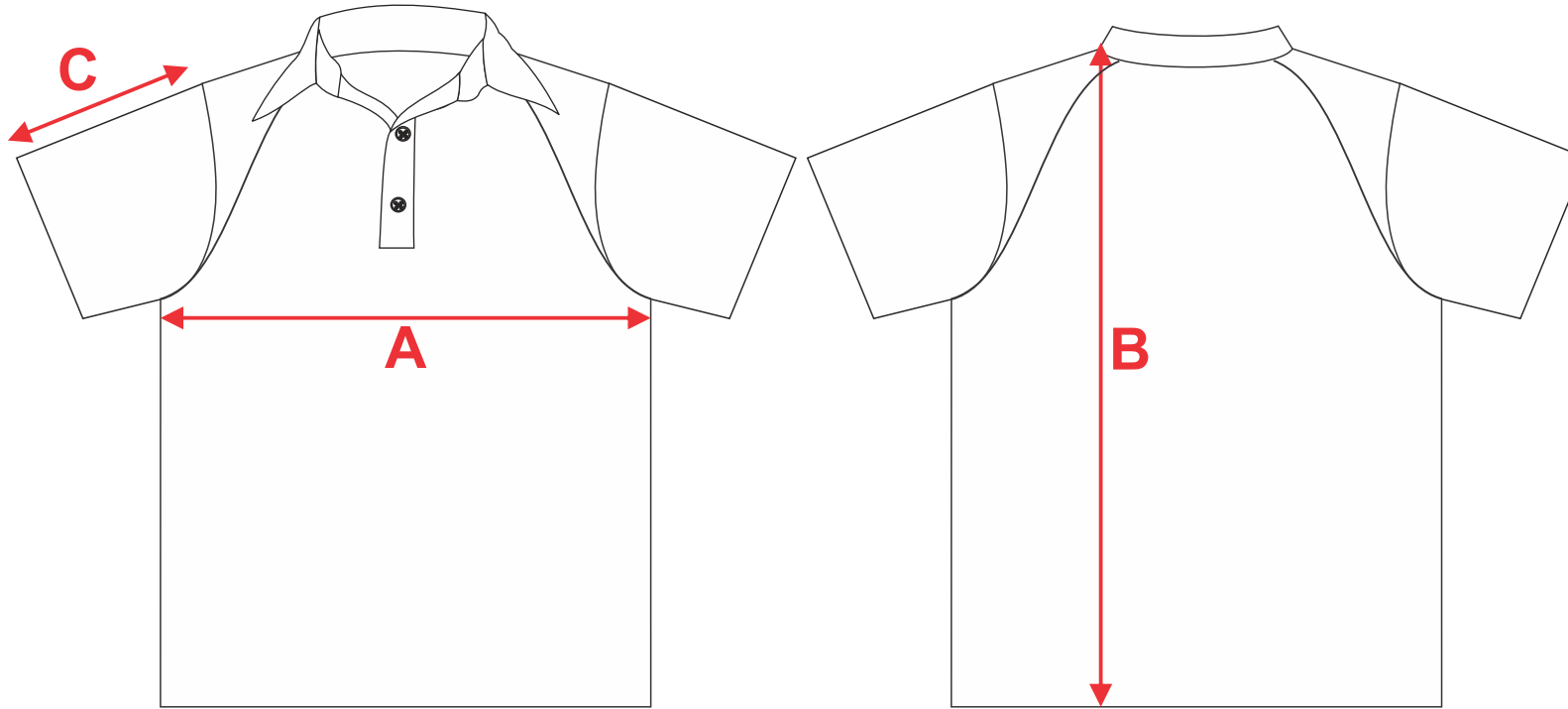


<b>SR</b>	<b>DESCRIPTION</b>	<b>K2</b>	<b>K4</b>	<b>K6</b>	<b>K8</b>	<b>K10</b>	<b>K12</b>	<b>K14</b>	<b>K16</b>
A	LENGTH	50	52.5	55	58	61	63	65	67.5
B	CHEST	33.5	35.5	37	40	42.5	44	45	47
C	BOTTOM	32	34	35.5	38.5	41	42.5	43.5	45.5
D	SLEEVE LENGTH	56	58	60	62	65	67	69	71
E	ARM HOLE	16	17	18	19	20	21	22	23
F	SLEEVE CUFFS	8	8.5	9	9.5	10	10.5	11	11.5

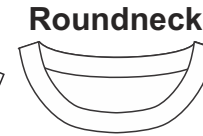
# K2 POLO TSHIRT



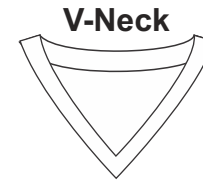
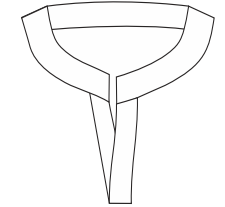
\*Measure Chest from 2cm Below armhole



## Collar Options:



Chinese Collar



V-Neck

Champion Collar



Size-cm	<u>XS</u>	<u>S</u>	<u>M</u>	<u>L</u>	<u>XL</u>	<u>2XL</u>	<u>3XL</u>	<u>4XL</u>	<u>5XL</u>	<u>6XL</u>	<u>7XL</u>
A <sup>1/2</sup> Chest	48.5	50.5	53	56	59	62	65	68	68	69.5	72
B	71	72.5	74.5	76.5	78	82	86	87.5	89.5	91	92.5
C	22.5	23.5	25	26	27	28	29.5	30.5	30.5	32	33.5

Size-cm	<u>K2</u>	<u>K4</u>	<u>K6</u>	<u>K8</u>	<u>K10</u>	<u>K12</u>	<u>K14</u>	<u>K16</u>
A <sup>1/2</sup> Chest	32.5	34.5	36.5	39.5	42	43	44.5	45.5
B	48.5	51.5	54	57	59.5	61.5	63.5	66.5
C	16	16.5	17.5	18.5	19.5	20	21	21.5



\*Approximate sewn garment size - cm unit

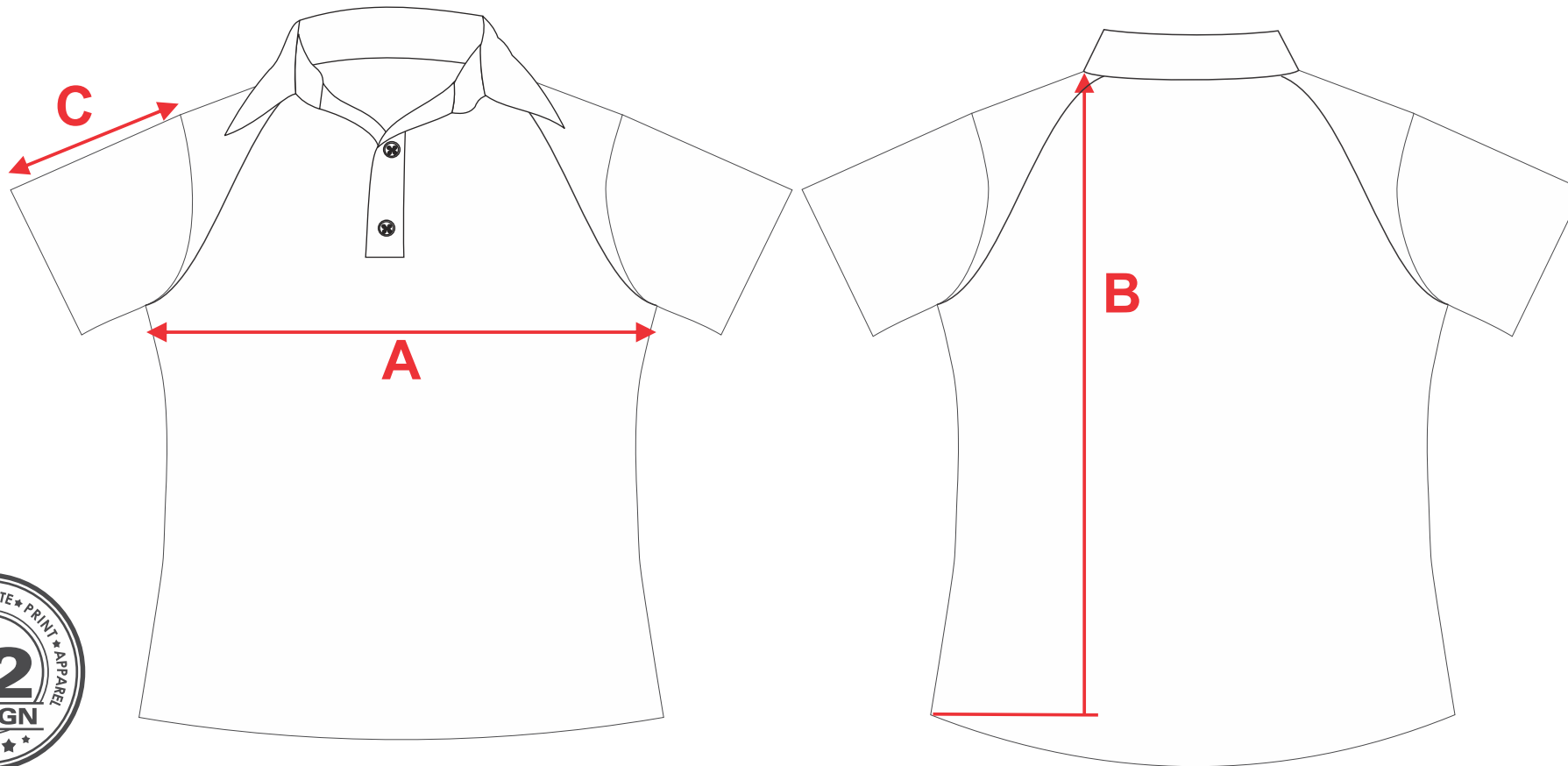
Side Seam: 1cm

Bottom Hem: 2.5cm

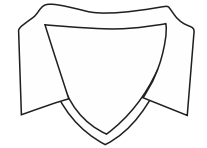
# K2 LADIES POLO SHIRT



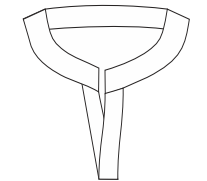
\*Measure Chest from 2cm Below armhole



V-neck Polo



Chinese Collar



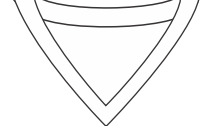
Roundneck



Champion Collar



V-neck



Size-cm	<u>6</u>	<u>8</u>	<u>10</u>	<u>12</u>	<u>14</u>	<u>16</u>	<u>18</u>	<u>20</u>	<u>22</u>	<u>24</u>	<u>26</u>
A <sup>1/2</sup> Chest	43	45	47	49	51	53	55	57	59	63	65
B	55	57	59	63	65	68	71	73	75	77	79
C	16	17	18	19	19.5	20.5	21	22	23	23.5	24.5

\*Approximate sewn garment size - cm unit

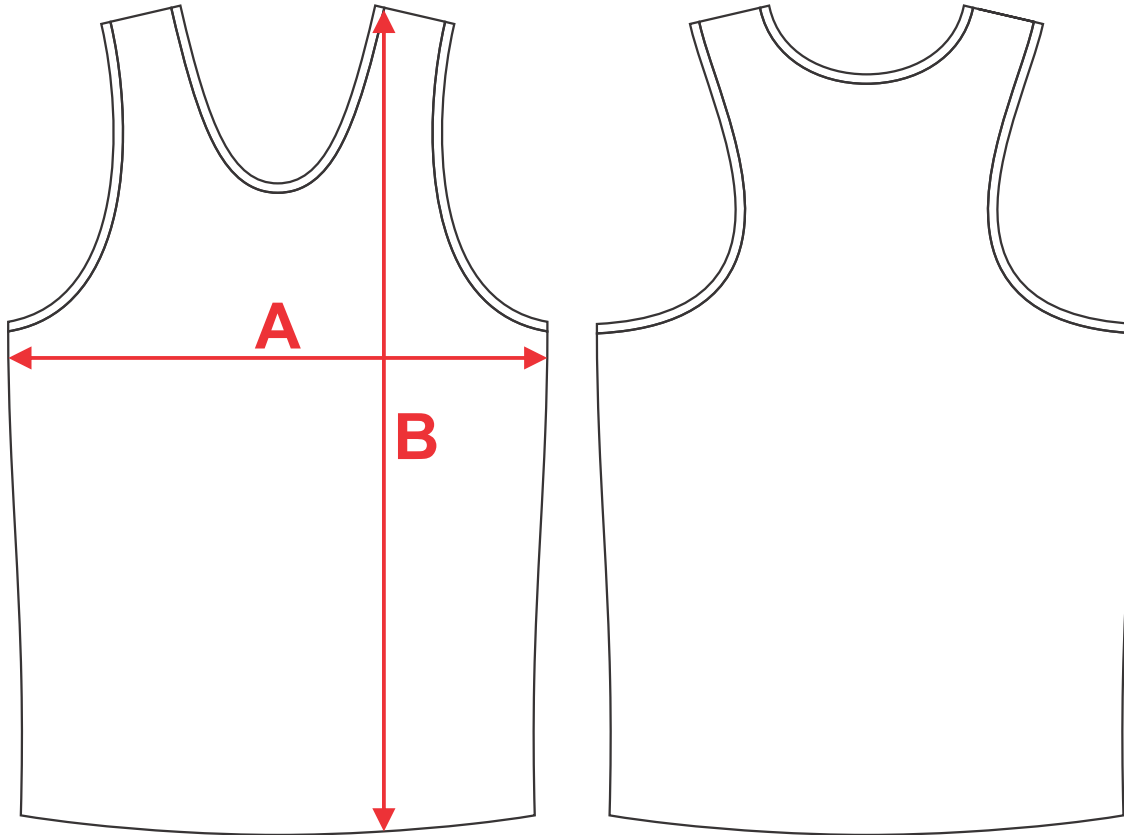
Side Seam: 1cm

Bottom Hem: 2.5cm

# K2 Sports-Active Singlet



\*Measure Chest from 2cm Below armhole



Kids-Men	K6	K8	K10	K12	K14	K16	S	M	L	XL	2XL	3XL	4XL	5XL
<b>A</b> <sup>1/2</sup> Chest	37	39	42	44	46	49	52	54	57	59	61	67	69	72
<b>B</b>	54	57	60	63	67	70	73	74	75	76	77	80	81	82

Ladies	6	8	10	12	14	16	18	20	22	24	26	28	30
<b>A</b> <sup>1/2</sup> Chest	37	40	43	46	49	52	54	57	60	63	66	69	72
<b>B</b>	54	59	61	64	66	68	70	72	73	74	75	77	78



\*Approximate sewn garment size - cm unit